



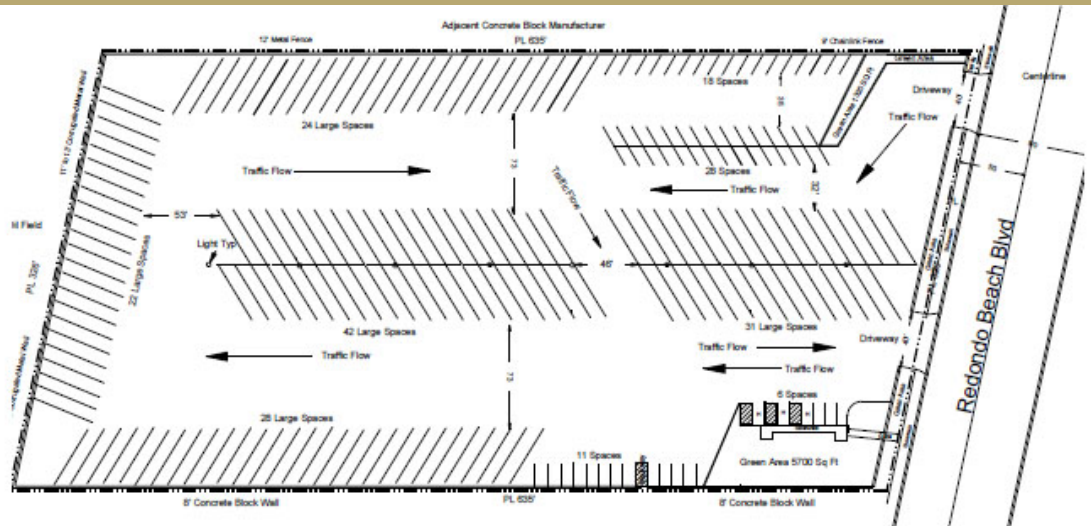
AVAILABLE

Klein Commercial
Real Estate, Inc.
1204 W. Gardena Blvd, #A
Gardena, CA 90247
Tel. 310-493-0053
www.kleincom.com



FOR LEASE

4.6 Acres Industrial Infill Site
Available Immediately
370 E. Redondo Beach Blvd.
Uninc L.A. County (Gardena PO)



4.6 Acres (201,000 SF) of Land For Lease — \$80,000 Per Month Gross.

Los Angeles Industrial Infill — Only Large Property Available

Block Wall with Two Sliding Gates at Front; Completely Fenced and Walled Around the Perimeter.

Lighting Throughout Entire Yard Area; Rock and Gravel Base

Permitted for general outside storage of vehicles, trucks, containers, vehicle or truck components and other associated materials and equipment until the year 2038.

Power and Sewer in Place to Install a Mobile Office Trailer

Unincorporated Los Angeles County. Near 110, 91, and 105 Freeways.

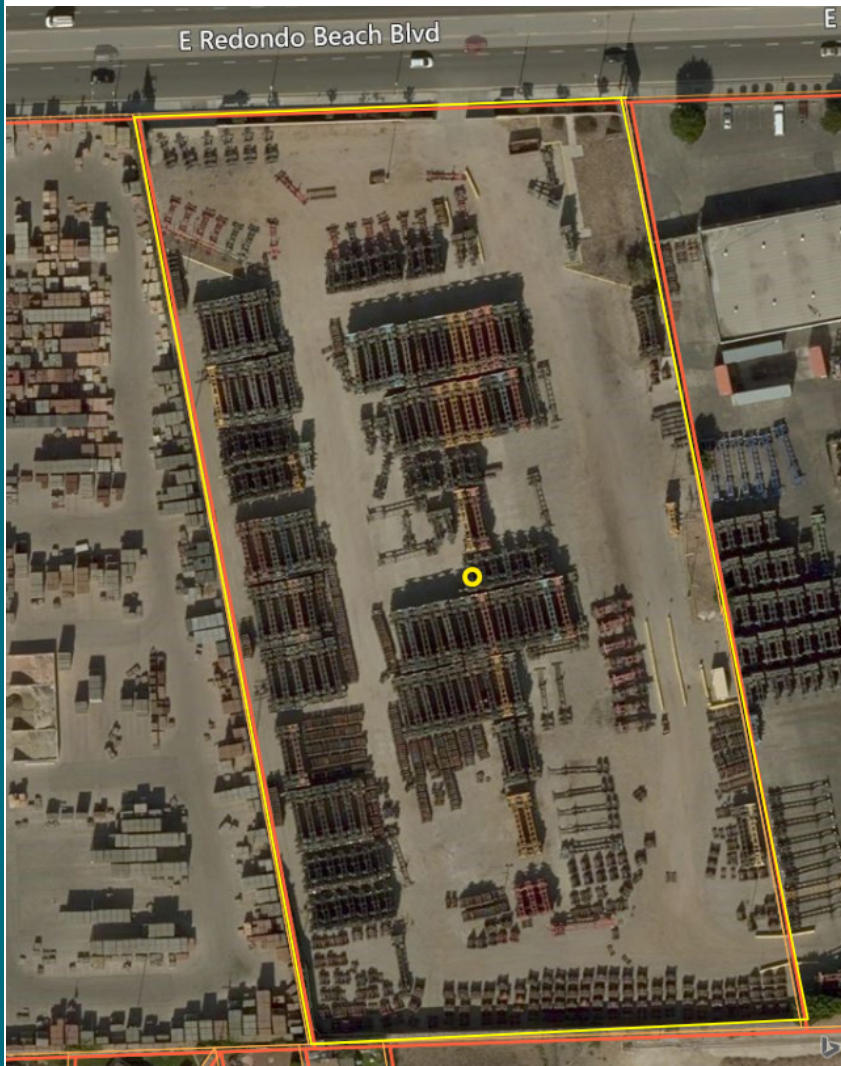
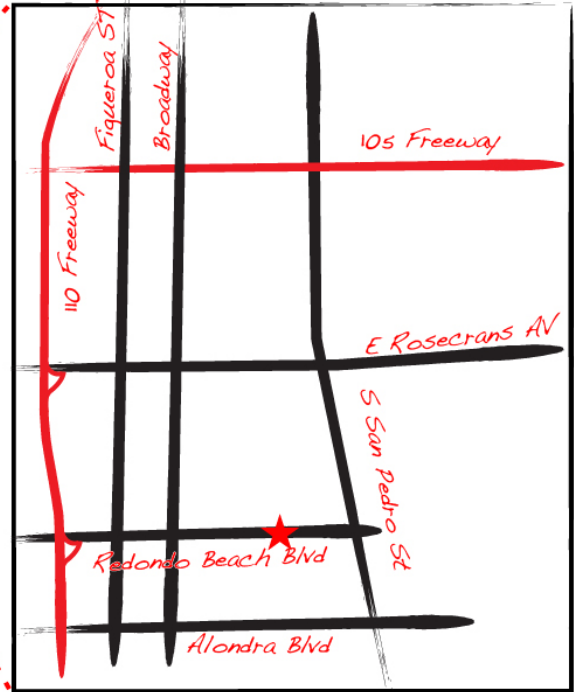
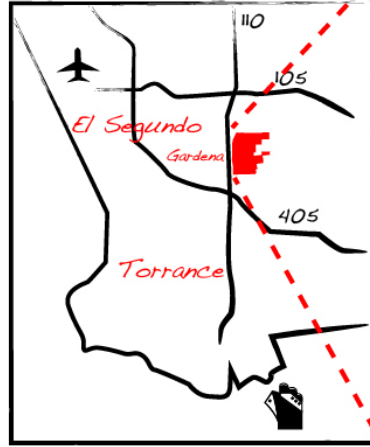
Please Contact: Jim Klein, SIOR; 310-451-8121; jimklein@kleincom.com

*All information has been obtained from reliable sources, however Property Owner and Broker make no representations as to the information's accuracy. All tenants to independently investigate and verify all matters pertaining to the property including but not limited to zoning, physical details, environmental, improvements and any other conditions that affect the Tenant's use and occupancy of the property.



AVAILABLE

4.6 Acres Industrial Infill Site 370 E. Redondo Beach Blvd. L.A. County (Gardena PO)



Klein Commercial
Real Estate, Inc.
1204 W. Gardena Blvd, #A
Gardena, CA 90247
Tel. 310-493-0053
www.kleincom.com

